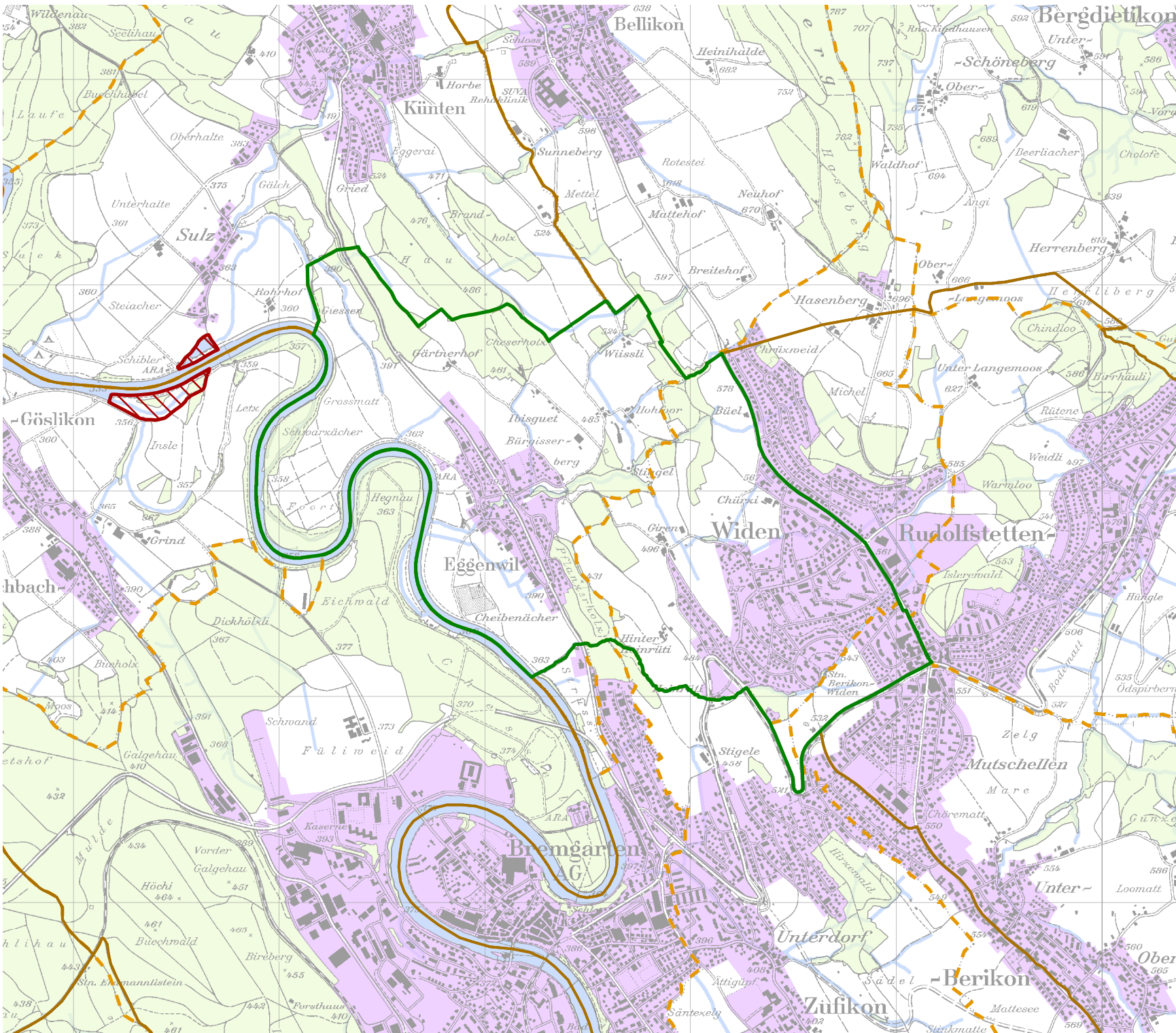







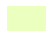

JAGDREVIERE IM KANTON AARGAU

Jagdrevier Nr. 46 Eggenwil

BAU, VERKEHR UND UMWELT
Abteilung Wald

Kartenherstellung: 28.3.2018 Stand: 1.1.2018



-  Jagdrevier Nr.46
-  Schonflächen
-  übrige Jagdreviere
-  Bauzonen (inkl Baugebiet)
-  Gemeindegrenzen
-  Wald
-  Gewässer

Quellen: Bundesamt für Landes-
topografie, Abteilung Wald des
Kantons Aargau